



THE FRIENDS OF BLANDFORD COMMUNITY HOSPITAL

Charity No. 800482

Milldown Road, Blandford Forum, Dorset, DT11 7DD – Tel/Fax 01258 450095

www.friendsblandford.org

Newsletter No. 41

SPRING 2011

“Top Notch”

The Blandford Hospital Shop Volunteers have recently unveiled a new section which they are calling “Top Notch”. These are the extra special items of ladies clothing that would normally have been modelled at the annual fashion show. Now, there will be no need to rummage from rail to rail if you are looking for something extra special, our wonderful



volunteers in the shop will have already selected the very best items especially for you. As with all the quality bargains available in the shop, these

items will be changing from day to day and new stock will be added all the time.

So if you are looking for a designer label, a never worn garment or something extra special then pop into the shop and have a look. Even if you can't find just what you are looking for hanging on display then the volunteers on duty will always be pleased to be your very own personal shoppers and check the stock room for you.



Of course, whatever you are looking for, the Friends of Blandford Hospital Charity shops, at Blandford and Sturminster Newton, are a great place to start. The stock is changing every day and you can always be sure of quality goods at bargain prices coupled with a friendly welcome.

STOP PRESS !!! *At a meeting on 18th February, attended by hospital staff, local GP practices, the Dorset Design Team and ourselves, the development of the hospital and, in particular, the theatre and Portman Ward, was discussed. The general hope was that Portman Ward would again be used, albeit with less beds. However, this has to be done in conjunction with the needs of the theatre, which, it is anticipated, will increase its level of activity - at present it is 52%. This is complicated by the new government regulations concerning single sex wards. Satisfying these will require careful planning. In order for the planning to be effective, patients needs from a community hospital have to be identified. It is, therefore, essential that we get feedback from you on what you want from your hospital. Please write or e-mail our office at the hospital with your views. It is vital that we get as many ideas from you as possible!*

E-mail address: friends.blandford@dorset-pct.nhs.uk

Fundraising News...

The Autumn/Winter fundraising season had its ups and downs. Needless to say, throughout, the volunteers involved in the fundraising activities pulled out all the stops and that wonderful team work paid off as usual.

Sturminster Cheese Festival, 11th/12th Sept

Once again the Cheese Festival Committee in Sturminster staged a wonderful event and we were very lucky to have a charity stall there manned by our volunteers mainly from our Sturminster Charity Shop. The stall raised just over £400 over the weekend.

Fashion Show and Clothing Sale, 1st/2nd Oct

The team worked extremely hard to stage a wonderful Catwalk show in the Corn Exchange on Friday 1st October. Frances provided beautiful flowers, Scribes gave us balloons and Peter lit up the hall to transform the Corn Exchange. The volunteer models wore wonderful clothing, shoes and accessories donated through the Friends' charity shops and at the end of the show and the next day, everything was offered on sale. A healthy profit of £2100 was made over the 2 days and our thanks go to everybody involved.

Autumn Bingo, 21st October

A great turnout for what is turning into a very popular regular event in our calendar. Thanks to Tish, the Hotel Services manager for standing in as our caller in Derek's absence.



Autumn Fair, 6th November

Once again a great day was had at the Autumn Fair and 59 volunteers were involved in setting up and manning the individual stalls. It was very satisfying to hear of a queue stretching down the market place when we opened the doors at 9.30 and £7,200 was taken at this event.

Christmas Bingo, 2nd December

Unfortunately, this is where the programme started to go down hill! As the first bad snows of the winter fell we had to take the decision to cancel our Christmas Bingo. Many events locally were cancelled that night and the decision was not taken lightly.

Christmas Concert by the Band of The Royal Corps of Signals, 17th December

Ever since the first snow of the winter, the weather men and women had been predicting heavy snow again before the end of the year and this didn't help our advance ticket sales for the band concert. We were devastated to wake up on the day to a carpet of snow that became considerably worse throughout the

morning. However, the band and the Coade Hall were happy to go ahead and so we did! As always the band put on a fantastic performance and the select audience of only 180 were very pleased they had braved the conditions and joined us for the evening. The concert still made a very acceptable profit of almost £1300 which was shared between the Friends and the Band's Charity, The Army Benevolent Fund.

Bingo, 17th February

Once again, a very well supported event with great prizes and a fun atmosphere.

We need you!

The Fundraising working group are always looking to introduce new events into the schedule and are currently discussing various options for the future.

How can you help?

- Perhaps you have an idea you would like to share with us?
- Perhaps you have unwanted gifts that you would be able to donate as raffle prizes?
- Would you have a "promise" you would be able to offer for a future "Auction of Promises"? Perhaps you have a holiday home that you could offer for a week or two, perhaps you would like to offer your services for dogwalking, house sitting, Cake baking....
- Perhaps you have a friend or colleague in the celebrity or business world that may be able to support one of our events or offer sponsorship?

And what about your time?

The one thing we need the most is your time. We need your time to support our events but we also need time from our supporters to help stage our events.

Even if you are unable to make a regular commitment as a shop or community volunteer, perhaps you would consider helping occasionally set up, man and clear up our events. Please consider giving your time and if you are interested give Emma a call in the Friends' Office for a chat.

THE FUNDRAISING SCHEDULE FOR 2011 IS ALREADY SET AND YOU WILL FIND IT IN THE DATES FOR YOUR DIARY SECTION FURTHER ON IN THIS NEWSLETTER.

A message from our Chairman, Peter Fale

This has been a frustrating and anxious time; our thoughts and energy being preoccupied mainly by trying to establish a future role for Portman Ward. The original scheme, plans for which were displayed in the Hospital Reception area, were costed at £2.2 million, a sum clearly beyond the resources of the Friends to raise. The PCT moreover, stated they could not allow such expenditure. There is to be a meeting on the 18th February between ourselves, the Dorset Design Team and the PCT to hopefully agree a way forward to enable the valuable facilities of Portman, including two Family Rooms, the Sun Room and the Millennium Garden, together with spectacular views of the bowling green and recreation ground to again be used effectively for their true purpose. A report of the meeting is in the Stop Press article on the front page. The staff, patients and the Friends see Portman as the heart of the hospital. I hope we can demonstrate to the PCT managers, who have not had much association with Blandford Hospital up to this point, the depth of feeling that we have. Furthermore, it is hoped that as GPs play an increasing role in the determination of what services patients should be provided with, where and by whom, that the role of Blandford Hospital would become clearer. We can then play our part in ensuring that these services are of the highest quality possible.

Expenditure on hospital equipment is very limited at the moment whilst we are in a period of uncertainty, but we continue to support patient facilities to the best of our ability. The Friends also are able to consider applications from hospital staff to fund additional training that will enhance the services offered at the hospital. As our community services programme continues to expand this requires further funding and we have also been able to consider applications for grants from health related projects in the local area.

If you have questions you would like directed to the Trust or comments that you would like to make regarding health care provision in our area then please feel free to use the Friends' Office at the hospital as a sounding board and we will gather these to present to the Trust Management. I would

welcome as many written comments as possible on any local healthcare provision issue.

Please send your letters and comments to the office or by Email to friends.blandford@dorset-pct.nhs.uk

I have been increasingly impressed with the great team working for the Friends. The shops and fundraising generally have continued to be very successful in these austere times. The number and enthusiasm of volunteers at our events is heart warming. The community volunteers are forever responding to different needs and their ideas are widely appreciated.

My sincere thanks go therefore to my whole marvellous team.

Peter Fale, February 2011

DID YOU KNOW THAT IN JUST ONE WEEK IN THE NHS...

1.4 million people are helped at home

Over **800,000** are treated in outpatient clinics which includes Blandford Community Hospital

700,000 visit an NHS dentist

Over **10,000** babies are delivered

NHS chiropodists see more than **150,000** pairs of feet

NHS ambulances make over **50,000** journeys

NHS Direct receive over **25,000** calls

Pharmacists dispense approx **8.5 million** items

1,200 hip and **3,000** heart operations are carried out

In the third quarter of 2010 Dorset NHS Trust handled 13,941 Accident & Emergency attendance

Please help us deliver our newsletters

Deliverers are still required in certain areas of Blandford and local villages.

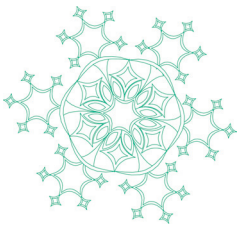
If your newsletter was delivered by post then you are in an area where we need help. Please give us a call on 01258 450095 if you would like to join our team that help us 3 times a year.

Thank you.



Volunteering with the Friends....

How we make a difference



I'm sure, like me, you are all glad to see the back of the extreme weather conditions we experienced before Christmas and hope we will not see so much snow again for a while!!

The weather certainly brought about its challenges in keeping our minibus running and making sure all of our clients got to their appointments on time. Fortunately, it didn't prevent us from going out for our "Christmas Dinners". This year we managed to arrange six dates to take our clients out on the mini bus for a social trip and a lunch prior to the festive season. Oh and not forgetting of course trips to the Dolphin Centre, Poole and Castlepoint to do any last minute Christmas shopping. We are now looking forward to our Spring and Summer outings to the old favourites and some new places too. Hopefully we can enjoy some lovely sunshine and warm weather!!

As a huge "Thank you" to all our volunteers, whether they are ward volunteers, drivers, befrienders, dog walkers or escorts, we have just held our annual volunteer dinner to show our appreciation to them all. None of the services we are able to offer would be possible without those volunteers. This was also an opportunity for the team to meet and get to know Andrew Havilland –

Chairman of the Community Services Working Group.

Christmas Day – I would like to thank personally two of our volunteers, Colin and Claire, who very kindly gave up an hour of their own time, not only in the build up to Christmas but on the day itself. They belong to a local singing group who regularly dress in traditional Victorian costume, and much to the delight of the patients sang carols on the ward. This was what we call "over and above" the role of any volunteer – **THANK YOU BOTH VERY MUCH.**

Another volunteer gave up time on Christmas Day to assist the Blandford Rotary Club with their Christmas Day lunch at the Crown Hotel which was enjoyed by many local residents.

This leads me on to say we are always looking for new volunteers to help with the ever-expanding service we offer throughout the community. If you find you could spare any time, it really doesn't matter how much or how little, we would love to hear from you. You can always call me in the Friends' Office for an informal chat on **01258 450095.**

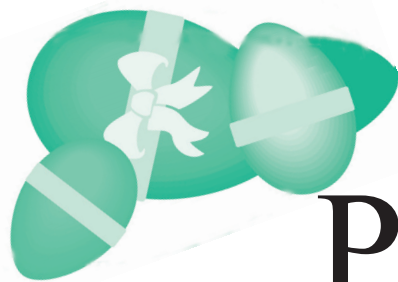
Lisa Deverell, February 2011

How to Contact us...

The Friends' Office at the hospital is usually open from **10.00am until 4.00pm** from Monday to Friday. The Tel/fax number is **01258 450095** and we can also be contacted by E-mail on **friends.blandford@dorset-pct.nhs.uk**

Our website address is **www.friendsblandford.org**

In the office you will find Sarah Connors (Office Manager), Lisa Deverell (Community Services Co-ordinator) and Emma Campbell (Fundraising Co-ordinator) and they will each be able to help you with your request or enquiry.



Easter Prize Bingo



Thursday 7th April

Doors Open 6.45pm

Eyes Down 7.30pm

Dining Room, Blandford Hospital

Limited Numbers so get there early

Fantastic Prizes

Further info from the Friends Office on 01258 450095

Dates for Your Diary 2011

17th Feb	Prize Bingo	Hospital Dining Room
7th April	Easter Bingo	Hospital Dining Room
25th June	Auction	Child Okeford Village Hall
6th July	AGM	Day Hospital
20th Oct	Autumn Bingo	Hospital Dining Room
5th Nov	Autumn Fair	Corn Exchange, Blandford
1st Dec	Christmas Bingo	Hospital Dining Room
16th Dec	Christmas Concert by The Band of the Royal Corps of Signals	Coade Hall, Bryanston

SHOP NEWS

Both of our Charity shops continue to thrive despite the challenges of the current economic climate and the teams of volunteers that run the shops continue to make us very proud.

Sturminster shop has welcomed some new volunteers at the start of this year and they are already established members of the team of 44. There is always plenty to keep the ladies and gents busy, both serving the customers and working behind the scenes, so new volunteers are always sought.

Blandford shop has noticed a lot of new customers since it was updated to its lighter and brighter look in June last year. The team of 60 volunteers have taken a great pride in their shop and work hard to ensure its continued success.

Stock urgently required:

Like most charity shops we have noticed a downturn in donations at both of our shops. Please consider donating your unwanted items and if you require a collection then give the office a call for us to arrange a convenient time.

We particularly need:

Good quality clothing for men, women and children, shoes, handbags, Household linens, DVDs, unwanted gifts and toiletries, jewellery, toys and quality bric a brac. We regret we are unable to accept videos, records, microwaves, computers, tube style televisions and furniture (except small items of antique furniture)

Our shops can be found at:

Innes Court, Station Road, Sturminster Newton

Tel: 01258 471245

Opening hours:

Monday	9am – 4pm
Tuesday – Friday	10am – 4pm
Saturday	9.30am – 12.30pm

And Barnack Walk, Blandford

Tel: 01258 458390

Opening hours:

Monday – Saturday	10am – 4pm
-------------------	------------

VOLUNTEERS ARE ALWAYS REQUIRED IN OUR CHARITY SHOPS. PLEASE CALL EMMA IN THE FRIENDS' OFFICE IF YOU WOULD BE INTERESTED IN JOINING THE FRIENDLY TEAMS.



Blandford School Year 10 student Monika Skoracka, born in Poland, has lived in Blandford with her mother for the last two years and helped shop staff as part of her Community Service gold award. Having completed her award Monika now continues working in the shop every Saturday morning. Volunteer Barbara Meegan, also pictured, described Monika as hard working, cheerful and a credit to her School. Monika, who has ambition to further her education at University in Britain commented that she found staff and customers kind and friendly and that she enjoyed supporting the local community and Hospital.

Thank You

We were delighted to receive donations in excess of £300 from Mike Lane, the 2010 Seniors Captain, at Ashley Wood Golf Club who nominated us as his local charity during his year as Captain. Our thanks go to all those club members that supported the Friends throughout the year.

Our thanks go to the Rotary Club of Blandford whose President Jim Atkins nominated us as his local charity to support this year. In January the club organised a very successful Western Casino Night at the Crown Hotel which was thoroughly enjoyed by all present including some of the Friends' Council Members. On May 30th they are planning a summer event in Blandford. Thank you to all of you in the Rotary Club for your continued support of our charity.



Matron's Update

There have been many changes at Blandford Community Hospital in the short time I have been leading the team and there are many more to come, not just within our hospital but for the whole of the National Health Service. In the current economic climate we must continue to ensure that the public purse is spent in the most efficient manner possible whilst not compromising on quality.

There will be changes to the commissioning of services provided in hospitals moving from the control of Primary Care Trusts (PCT's) to local General Practice (GP) consortiums in 2012 following an announcement from the government last year in the white paper "Equity and Excellence: Liberating the NHS". I am hopeful that this will encourage the development of appropriate services within our community hospital to meet the needs of the local population and provide even more appropriate care closer to home.

Another change for us at this hospital is that from 1st April 2011 Dorset Community Health Services (our NHS trust name) will be hosted for a period of two years by Dorset Health Care University Foundation Trust. During this time our trust will decide whether to attempt to obtain foundation trust status as a standalone trust or merge permanently with a foundation trust. I am advised that this will not affect the care we provide within our hospital.

We received a second unannounced inspection from the Care Quality Commission (CQC) in December. The CQC is the regulatory body for all health and social care facilities and have the power to close down hospitals and care homes etc. I am very happy to announce again that we received positive feedback following the inspection which focussed on patient care and documentation. We also underwent an unannounced inspection from the Primary Care Trust in November

looking at cleaning and hygiene standards throughout the hospital for which we scored highly.

As I have got to know the team within the hospital better it has become clear to me that I have a great group of staff with extremely high standards across the board. The team are dedicated to deliver quality care to our patients and have a great sense of pride in what they do. The Friends of Blandford Hospital continue to offer tremendous support to the team, which enhances what we are able to do for our patients and for which I am very grateful.

Darren Wickwar, January 2011

GOOD LUCK EMMA



Physiotherapist, Emma Whittaker, is so grateful for the support her department have from the Friends that she is going to Skydive to raise funds whilst in New Zealand this year.

If you would like to sponsor Emma, please give the Friends' office a call or drop in to the hospital Physiotherapy department.

MEMBERSHIP SUBSCRIPTION

Annual membership will become due at the beginning of April. A subscription renewal form and envelope are enclosed with this newsletter for your use.

Subscription is a minimum of £1 per year or whatever you would like to give.



If you do not already do so, please consider paying by Bank Standing Order this year and in future years. This will significantly reduce our administration costs.

Please note, if you already pay by standing order there is no need to send a subscription or complete the renewal form.

Thank you for your continued support

Countdown to... Auction 2011

The 15th auction approaches and the milestone should be marked by an extra special sale. I would ask our members to make a special effort to help enhance the catalogue by seeking out items for which they have no further use or perhaps that have languished in their attics but would raise valuable funds. In recent years we have had less jewellery and the indications are that will be the case this year. Old costume jewellery as well as gold and silver plays an important part in our catalogue. However, there are many things which will fetch good prices that may be overlooked by you as potential lots. To help you I have compiled a list to consider. If you do have something to donate, please bring it to one of the shops marked "Auction" or ring the office to arrange collection. The Auction is not until 25th June but please start thinking about it now.

A is for Amber, Art Deco, Art Nouveau, Asprey items, Autographs. **B** is for Bagpipes, Bags (evening, old, decorated), Barometers, Beswick, Boxes (wooden, decorated, tea boxes etc.) Bisque items (figures, busts, animals etc.), Books (old leather bound), Bracelets (silver or gold), Bristol Glassware, Bronze figures and animals, Burleigh Ware, Butler's trays. **C** is for Cameos, Card Cases, Carlton Ware, Cellos, Clarice Cliff, Commemorative items (pre-George 6th), Compacts (pre-1950, decorated), Susie Cooper figures, Cranberry Glass (old). **D** is for Daum glass items, Decanter labels (Enamel or Silver), Dolls (pre-1950), Dresden items, Drug Jars and Bottles, Drinking Glasses (pre-1900). **E** is for Elgin Watches, Embroidery (pre-1900), E'pergnes, Ephemera (Cigarette cards, Old Postcards and Christmas Cards (early 20th century), Very early Comics. **F** is for Faberge, Fishing Rods and Reels (older, eg split cane), Fob Watches, Footbaths (pottery or porcelain) Football Programmes (mid to late 20th Century), Footstools (tapestry), Fans (Old lace, ivory, and embroidered), etc. **G** is for Galle glassware, Garnitures (clocks with vases), Mary Gregory glass items, W.H. Goss souvenir porcelain miniatures, Glove Boxes and stretchers, Gold. **H** is for Hatpins (old highly decorated), Honey pots, Hat stands, Hunter Watches, Horses(rocking). **I** is for Ink stands and Inkwells, Ivory figures, Netsuke Boxes, Indo Persian Rugs. **J** is for Jewellery, Jade. Jasper wares, Jacobite glass, Jardinieres (majolica). **K** is for Knife boxes, Kettles(copper, silver or plate), Kilims, Kewpie dolls **L** is for Lace and Linens(19th century), Lalique, Limoges Porcelain, Items by Liberty and Co, London Delft, Lowtoft Animals and other items, Lustreware. **M** is for Moorcroft, Maling wares, Mantel clocks, Maps and Atlases (old). Matchbox Cars (in original boxes), Meccano (very early/in original box), Medals, Meissen, Microscopes, Minton Animals, Mother of Pearl boxes and Card Cases. **N** is for Nailsea Glass, Napkin Rings (silver), Noah's Arks, New Hall jugs and other items. **O** is for Orrefors, Overlay glass, Oil lamps, Opal items, Optical devices and Viewers, Oak stools. **P** is for Paperweights (glass millefeuille or similar, preferably old), Parian busts etc, Pearl Jewellery, Portraits(miniatures and silhouettes), Pocket watches, Puzzle Jugs, Photograph albums 19th century, Fountain pens (early Parker, Watermans and similar). **Q** is for Quimper, Patchwork Quilts. **R** is for Rattles (silver), Charlotte Rhead, Royal Copenhagen, Royal Worcester animals, painted plates, and other items, Ruskin Pottery, Reverse Glass Painting, Reels (old wooden fishing reels) **S** is for Salt glazed items such as Animals, inkstands, loving cups, etc. Scent bottles (early 20th century in glass, ceramic and silver), Old embroidered samplers, Sewing tables, Sevres porcelain, Sterling Silver, Snuff boxes and Bottles, Spelter figures and clocks, Stools (music), Stickpins, Staffordshire Animals. **T** is for Teddy Bears (Steiff, Merrythought, Bing, Chiltern, Farnell), Tapestries, Telescopes, Tiffany Glass, lighting and Silver, Tunbridge Ware. **U** is for Umbrella stands, old Urns. **V** is for Vesta Cases, Vinaigrettes, Violins, Venetian Glass. **W** is for Wade items especially NAT West pigs, Wemyss animals and other items, Wine tables, Writing Boxes and Writing Slopes, Watches (pre-quartz). **X** is for Xpectations of which mine are high! **Y** is for You to whom we give our thanks. **Z** is the tricky one but Zithers have sold in the past!

These are just examples and if you are not sure that what you are able to give is appropriate please call Emma, if she cannot give you an answer she certainly knows someone who will.

My sincere thanks to you all, Gordon Adam.